



wallas[®]

Top quality for boaters



Finnish, high-quality Wallas products are designed for the demanding Nordic conditions and can be trusted to operate on all waters. 30 years of experience and continuous product development have helped us create a product range that emphasises safety and reliability, the qualities valued by all boaters.

The success of Wallas is based on high-quality products and innovative product development. We focus on highly advanced design of even the smallest details of the products.

Wallas stoves and heaters are based on our own burner technology that provides a wide power range and ensures extremely clean, laminar burning. The closed and balanced combustion air circulation combined with non-exploding and non-pressurised fuel guarantee safe operation.

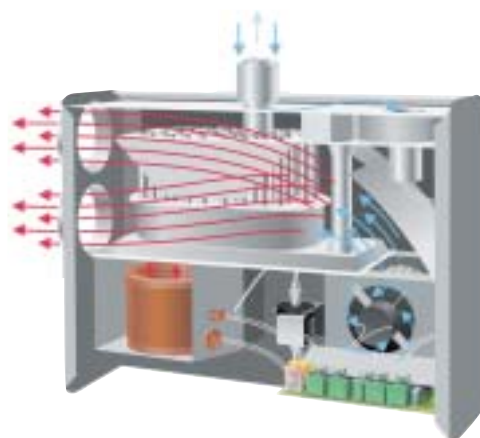
Safe cooking

The unique combination of stove and heater. All Wallas stoves can be equipped with a separate heat blower lid that enables using the stove as a heater.



- safe
- no humidity indoors
- easy to use
- serves both as stove and heater

Quiet and convenient. We pay special attention to the user convenience of Wallas heaters. Heat should be felt, but it need not be heard. The quiet Wallas heater operates smoothly both in icy wind and sunshine.



- quiet
- easy installation
- low power consumption
- stainless




Safeflame DIESEL

P

Paraffin oil-operated

D

Diesel oil-operated


 Gimbal-mounting





Heat blower lid (+0,4A)

The flush-mounted stove and separately installed oven have independent operating switches that can be placed as desired, e.g. out of reach of children. All ceramic stoves are equipped with stepless power adjustment. Once switched on, the cooking properties and heat are on a par with a home stove. The fuel for these diesel oil-operated devices can be taken from the boat's main tank.




Wallas 95DU		
900 -1800W	0,15A	D
0,09-0,18l/h	12V	




Wallas 95DP			12V
900 -1800W	0,15A	D	
0,09-0,18l/h			



Wallas 96D		
900 -1800W	1,6A	D
0,1-0,2 l/h	12V	



Wallas 97D		
Stove 900 -1800W	1,6+0,15A	D
Oven 900 -1800W	12V	
0,09-0,38l/h		

Safeflame 96D is the first diesel oil-operated oven in the world. It features e.g. durable stainless steel casing, thermostat-controlled circulation air heating, timer and temperature display. Thanks to the circulation air technology the oven bakes at even temperature without burning the food.


Safeflame PARAFFIN

P	Paraffin oil-operated
D	Diesel oil-operated


	Gimbal-mounting		Heat blower lid (+0,4A)
---	-----------------	---	-------------------------

Models 800 and 90 have separate operating switches, while other models have integrated switches in the stove or oven frame. On ceramic paraffin oil and diesel oil-operated stoves cookware can be freely moved along the entire cooking surface in order to locate the most suitable temperature. Iron stoves have traditional iron hot plates. The fuel consumption is very low; for instance, a separate 5-litre tank is sufficient for ca. 50 hours of cooking.





Wallas 800			
650 - 1200W	0,15A	P	
0,07-0,13l/h	12V		




Wallas 900			
850 - 1400W	0,1A	P	
0,09/0,15l/h	12V		





Wallas 1000			
850 - 1400W	0,1A	P	
0,09/0,15l/h			




Wallas 90			
600 - 1400W	0,15A	P	
0,07-0,17l/h	12V		




Wallas 100			
12V			
600 - 1400W	0,15A	P	
0,07-0,17l/h			



Wallas 150			
450 - 1300W	0,15A	P	
0,05-0,15l/h	12V		



Wallas 250			
Stove 600 - 1400W	2 x 0,15A	P	
Oven 450 - 1300W	12V		
0,05-0,32l/h			

Nautic DIESEL


P	Paraffin oil-operated
D	Diesel oil-operated




Fresh air fan

There are two options for heat adjustment of Nautic Diesel models. When controlled with the Info Control Panel, the heat is adjusted by a thermostat. In addition to heating, the device can be used as a fresh air fan.



Nautic 30D			
1000 - 3000W	1,0-1,9A	D	
0,1-0,3l/h	12V		



Nautic 40D			
1300 - 4000W	2,0-3,9A	D	
0,13-0,4l/h	12V		

30D takes the heating air from the space where it is installed. The heater has a low power consumption, and it is very easy to install. 40D takes the air through air hoses enabling the heater to be installed, for instance, in the engine compartment. The operating noise of both models is very low. All components are made of stainless materials.

The unique Wallas control system, based on an info display, includes the following functions:

Timer: The heater can be set to start up to 31 days in advance, and the running time can be set from 0-24 hours. **Cabin temperature indicator and thermostat control:**

The thermostat is located inside the Info Control Panel. The thermostat's reaction to temperature changes can be adjusted. Manual power adjustment is also possible.

Versatile operation details: The info display clearly indicates power consumption (A), fuel consumption (l/h), burner temperature, operating hours, battery voltage and status. It also indicates the need for scheduled maintenance and any disorders such as: flame out, damaged glow, low voltage, overheating and faults in fan functions.



30D, 40D

Classic PARAFFIN

P	Paraffin oil-operated
D	Diesel oil-operated



Fresh air fan

The operating switch and indicator light of Wallas 1300 is located on the end of the heater, while other models have a separate control box (available as accessory to 1300). In models 1800, 2400 and 3200 the operating switch can be set at full, half or low power or fresh air ventilation. Wallas 1300 is ideally suited for heating one spacious cabin or the wheel house. Particularly low power consumption makes 1800 an excellent choice to sailing boats. Quiet and powerful models 2400 and 3200 are suited to larger sailing and motor boats.



Wallas 1300			
1200W	0,4A	P	
0,125l/h	12V		



Wallas 1800			
950/1700W	0,35/0,5A	P	
0,1/0,18l/h	12V		



Wallas 2400			
1200/2300W	0,5/1,3A	P	
0,12/0,24l/h	12V		



Wallas 3200			
1500/3000W	0,9/1,9A	P	
0,16/0,32l/h	12V		



30D, 40D



1300



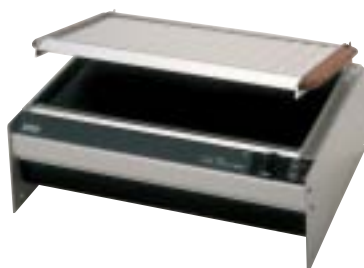
1800, 2400, 3200

Accessories

Gimbal-mounting

Heat blower lids

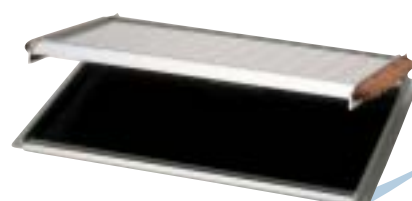
The lid is lifted up when used as a stove. When closed, blowers inside the lid are activated, blowing the heat of the hot plates into the cabin. All models can be equipped with a heat blower lid.



25	(95DP)
900 - 1800W	0,4A 12V



25	(95DU)
900 - 1800W	0,4A 12V



25 + 106	(90)
600 - 1400W	0,4A 12V



20	(100)
600 - 1400W	0,4A 12V



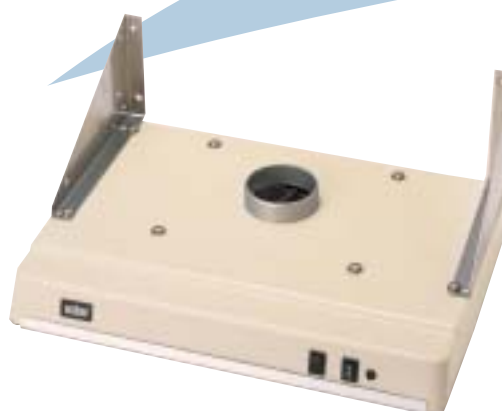
200	(1000)
850 - 1400W	0,4A 12V



200U	(900)
850 - 1400W	0,4A 12V



220	(800)
650 - 1200W	0,4A 12V



Hood

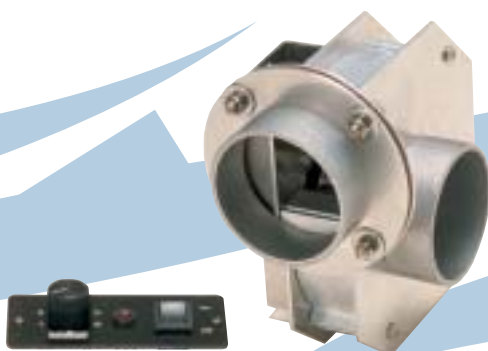
Two speeds, equipped with light. A silent and efficient hood for your stove.

10	
100Pa	0,3A/0,6 A
15l/s (50m³/h)	12V
💡 0,4A	

Accessories



High-quality hull and deck exhaust heads. Insulation of warm air hoses is recommended in order to minimise heat loss. Hoses with different diameters can be connected by using adapters (60-75-90 mm).



The steplessly adjusted extra blower 3415 can be used to direct extra heat to a specific location (e.g. exceptionally long warm air hoses).



Cabin thermostat is available for the following models: 1800, 2400, 3200, 30D (Info Control Panel), 40D (Info Control Panel).

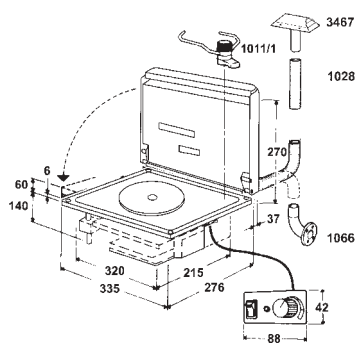


The low 10-litre special tank can be fitted to different storage compartments of the boat. Fuel filter is also a standard feature in the stationary tank installation set.

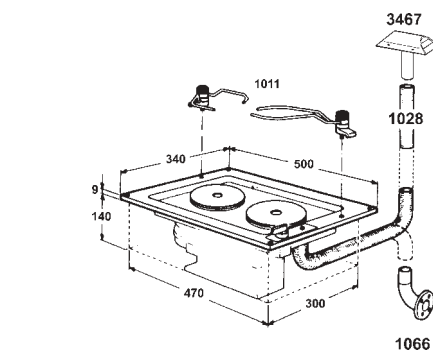


Gimbal-mountings available for models 1000, 100, 150, 250, 95DP, 96D, 97D. Pot holders available for all models.

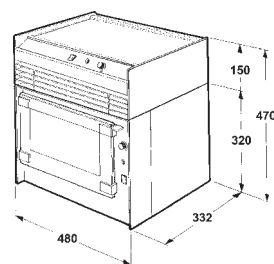
Dimensions and instalment accessories



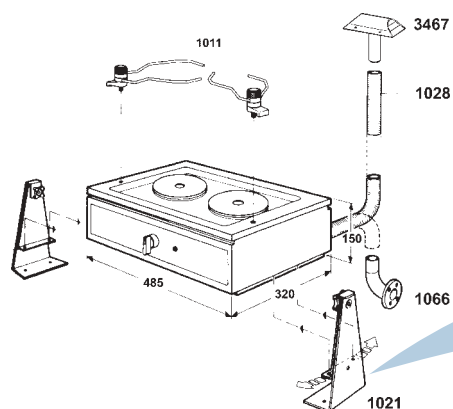
Wallas 800 + 220



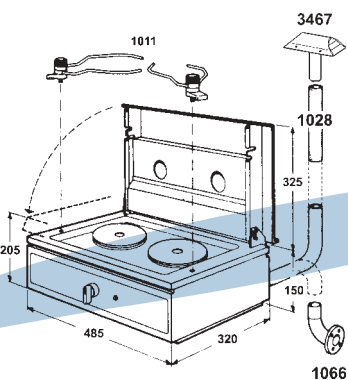
Wallas 900



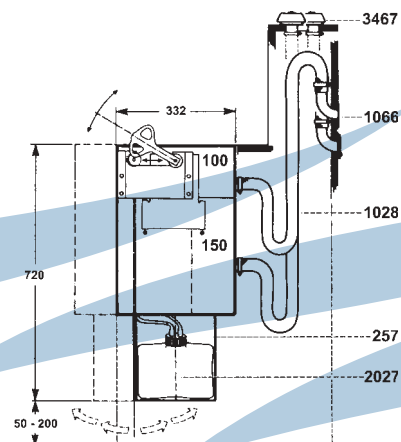
Wallas 250



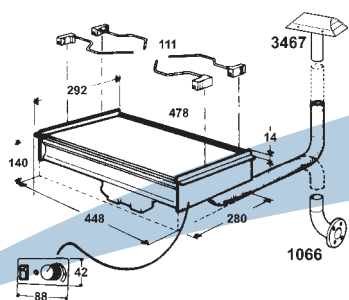
Wallas 1000



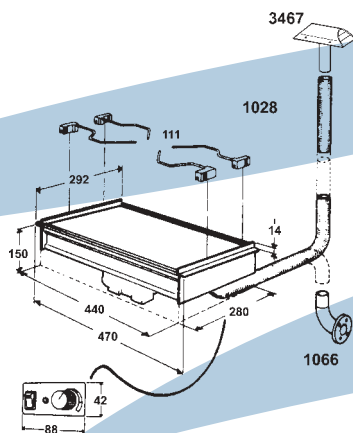
Wallas 1000 + 200



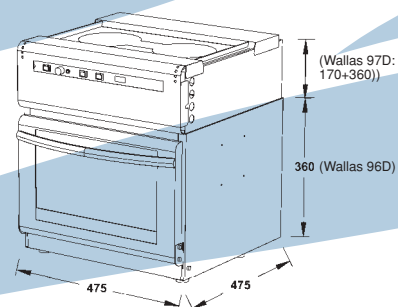
Wallas 250



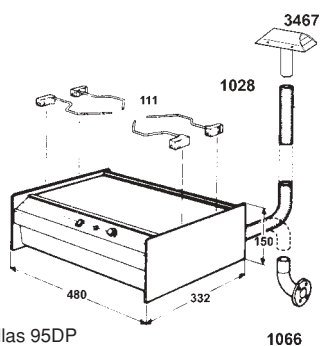
Wallas 90



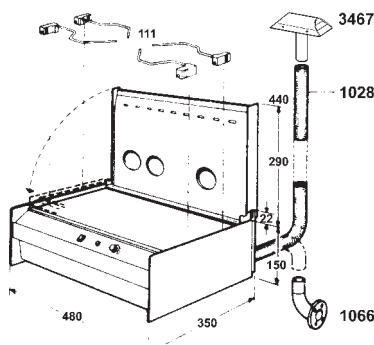
Wallas 95DU



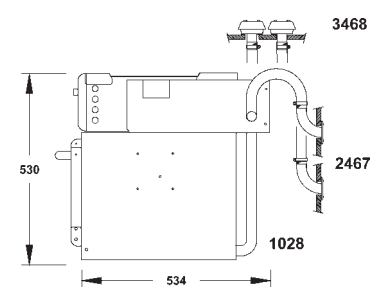
Wallas 96D
Wallas 97D



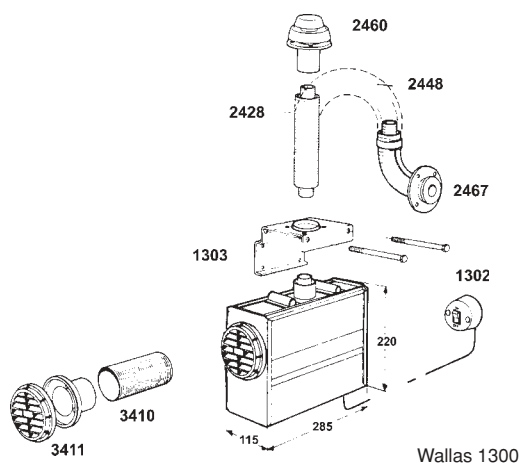
Wallas 95DP
Wallas 100



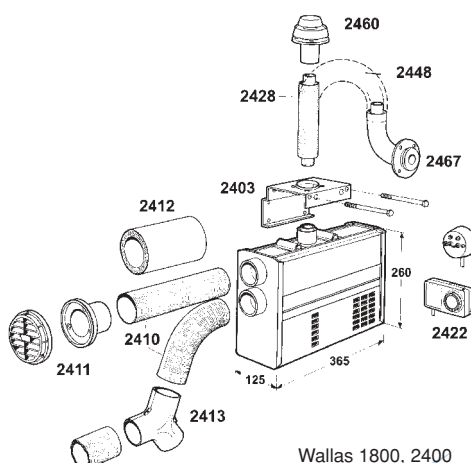
Wallas 95DP + 25
Wallas 100 + 20



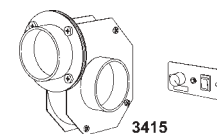
Wallas 97D



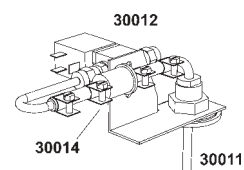
Wallas 1300



Wallas 1800, 2400



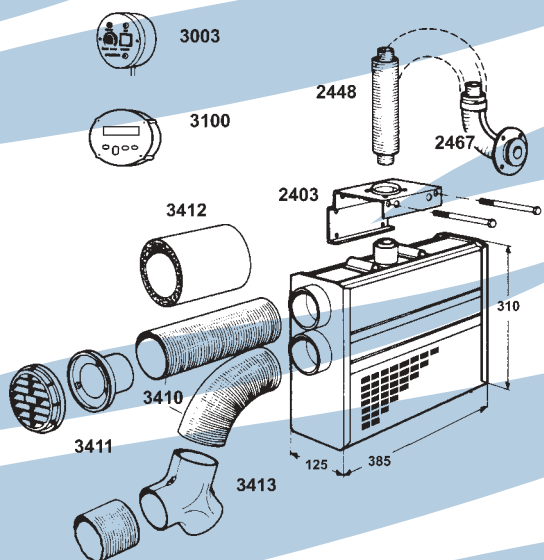
3415



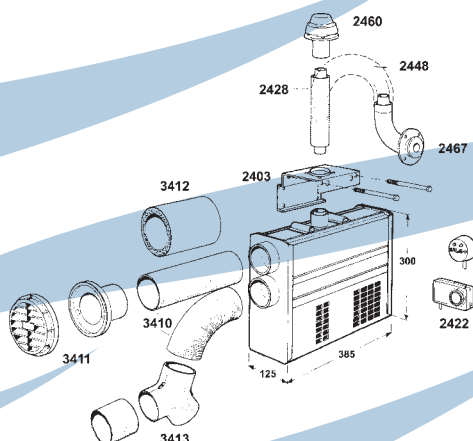
30012

30014

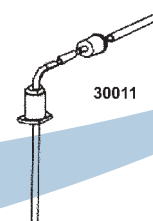
30011



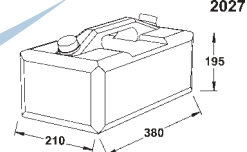
Wallas Nautic 30D



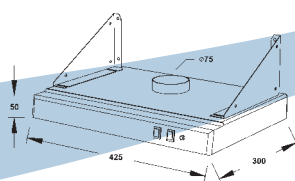
Wallas 3200



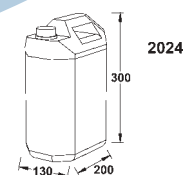
30011



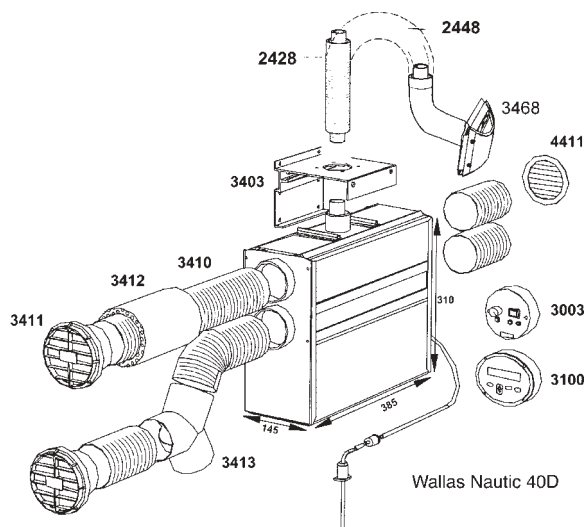
2027



Wallas 10



2024



Wallas Nautic 40D

Model	Maximum dimensions				Compatible exhaust lead-throughs
	Fuel hoses separate tanks(m)	Fuel hoses fixed tanks (m)	Exhaust tube (m)	Warm air hoses (m/Ø)	
800	2		5		3467,1066, 3467, 2466
900	2		2		3467,1066, 3467, 2466
1000	2		2		3467,1066, 3467, 2466
100	2		5		3467,1066, 3467, 2466
90	2		5		3467,1066, 3467, 2466
150	2		5		3467,1066, 3467, 2466
1300	2		0,4	1/75mm	3468, 2467, 3468, 2460
1800	2		2	2x5/60mm	3468, 2467, 3468, 2460
2400	2		2	2x8/60mm	3468, 2467, 3468, 2460
3200	2		2	2x8/75mm	3468, 2467, 3468, 2460
95D		4+4	4	-	3467,1066, 3467, 2466
96D		4+4	4	-	3468, 2467, 3468, 2460
30D		4+4	2	2x8/75	3468, 2467, 3468, 2460
40D		4+4	4	2x8/75	3468, 2467, 3468, 2460+2069



3467



1066



3467



2466



3468



2467



3468



2460



wallas[®]

Manufacturer: Wallas-Marin Oy, Kärriykatu 4, 20780 Kaarina, Finland.
Tel. +358 (0)2 412 0500, Fax +358 (0)2 412 0510. www.wallas.com